

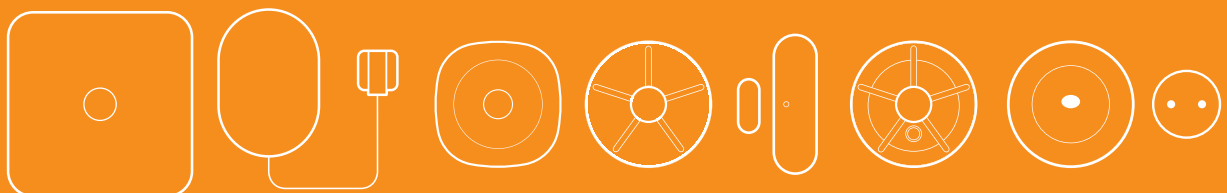
Product catalogue

World-leading white label IoT platform

Home care • Security • Energy



Gateways • Sensors • Relays • Smart plugs • Meter interfaces



Sensors and alarms

Zigbee sensors and alarms with numerous functionalities



Audio Assistant

The Audio Assistant allows a person in need to get in contact with people outside their home, for instance, an alarm central. The device acts as a Bluetooth speaker phone with additional features such as a panic button, and can be used for alarm validation in home care and other safety solutions.



Vibration Sensor

The Vibration Sensor detects and reports vibration. It is designed for home care solutions and gives valuable insights into patients' sleep schedules and activity. In a security solution, the Vibration sensor protects homes and buildings by giving alarm when windows or glass surfaces are shattered. The sensor also detects temperature.



Panic Button

The Panic Button is a Zigbee-based emergency button that enables elderly or disabled people to call for help when they need it. The Panic Button can be worn in several ways, for example around the neck or wrist, or mounted on the wall. It is water-proof and thus also suited for use in bathrooms.



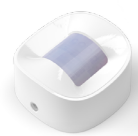
Motion Sensor

The compact Motion Sensor allows users to detect occupancy, light, and temperature with only one device. The occupancy sensor is PIR-based and able to sense movement up to 9 meters away from the sensor. Motion Sensor includes a tamper a switch and offers several mounting options.



Entry Sensor 2 Pro

The Entry Sensor detects and reports the opening and closing of the doors and windows. Easily installed on any door or window, the sensor triggers a signal when parted from the magnet. The sensor also features a built-in temperature functionality.



Motion Sensor 2 Pet

The compact Motion Sensor 2 Pet is a pet immune occupancy and alarm sensor that enables users to detect occupancy, light, and temperature with only one device. The motion sensor is PIR-based and can sense movement up to 9 meters away from the sensor. It includes tamper protection and is easily installed with several mounting options.



Air Quality Sensor

The battery-powered Air Quality Sensor continuously monitors indoor air quality. By detecting VOC levels in indoor air, the Air Quality Sensor enables monitoring of air quality in order to maintain healthy and clean indoor air. The sensor features long battery life, long range and accurate reporting of VOC levels, temperature, and humidity.



Smart Humidity Sensor

The Smart Humidity Sensor monitors temperature and humidity levels in a room. By supervising the indoor climate, the Smart Humidity Sensor helps maintain the ideal comfort level and protect the interior, electronics, musical instruments, furniture, artwork, and any other humidity-sensitive household item.

Sensors and alarms

Zigbee sensors and alarms with numerous functionalities

Smart Button

The Smart Button is a programmable, Zigbee button, which can be used for multiple purposes. The possibilities include: a door lock button, a switch for turning on/off the lights or home appliances, and a safety button for emergencies. The Smart Button is water-proof and suited for indoor and outdoor use.



Intelligent Smoke Alarm

The Intelligent Smoke Alarm alerts residents with a loud sound in case of smoke formation. The Intelligent Smoke Alarm can also activate the siren of other smoke alarms in the building via wireless communication. Moreover, the Intelligent Smoke Alarm reports the status and temperature via the given smart home system.



Intelligent Heat Alarm

The Intelligent Heat Alarm is specifically useful in environments where a traditional optical smoke sensor can cause false detections. This heat-based fire alarm is designed for installation in private homes or garages with risk of smoky, dusty, or humid environments. The thermo-sensitive detector detects both rapidly increased heat and absolute heat levels. It will alert users with a loud sound as a warning or via a smart home solution.



Water Leak Detector

The Water Leak Detector provides an early warning to help avoid or reduce potential damage from water leakages. The Water Leak Detector has a built-in 85 dB siren alerting the users when water is detected. The detector is designed for leakage detection in private homes, camping trailers, garages, and in humid environments such as kitchens and bathrooms.



Water Leak Detector Probe

The Water Leak Detector Probe is an accessory option for the Water Leak Detector. The probe is designed to detect water in areas with high risk of flooding, e.g. basements, or with poor accessibility, i.e. underneath domestic appliances. Through instant leakage detection, the probe will help prevent potential damage to properties and personal belongings.



Smart Siren

The Smart Siren is a combined siren, voice prompt, and range extender. If intruders enter the property of the users, the siren emits a loud sound, making it suitable for security purposes. Via the voice prompt, the siren can play voice messages, e.g. to warn users. The Smart Siren includes battery backup, enabling it to function despite power cuts, and a tamper switch.



Intelligent Keypad

The Intelligent Keypad provides users with secure access control. It allows them to enable and disable their alarm system using an RFID tag or a pin code. It can also be used to lock and unlock doors remotely. A tamper switch makes the Keypad suitable for alarm systems. For longer battery life, a sensor ensures that battery is saved when the Keypad is not in use.



Zigbee Range Extender

The Zigbee Range Extender securely expands the range of your Zigbee network. It enables you to cover large areas and increase the number of devices in your solution. The Zigbee Range Extender can include a battery backup to ensure that your solution works also in cases of power loss.



Smart plugs

Monitor power consumption and control electrical appliances



Smart Plug Mini 2

The Smart Plug Mini 2 is the world's smallest. It is an intelligent remotely controlled adapter that monitors the power consumption and enables the user to control electrical equipment by switching it on or off remotely via Zigbee. The Smart Plug Mini 2 is easy to use since it requires no installation. The user just has to put it into an electrical outlet and then plug in the desired electrical device.



Type F (Schuko)

Used in: Germany, Greece, Hungary, Indonesia, Italy, Luxembourg, the Netherlands, Norway, Russia, Spain, and Sweden.



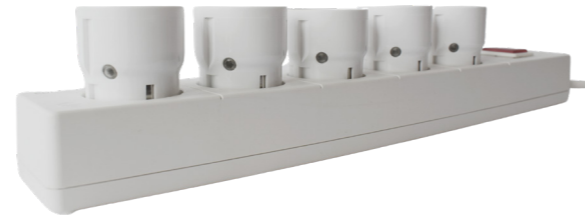
Type E (French)

Used in: Belgium, Czech Republic, France, Poland, and Slovakia.



Type G (British)

Used in: UK, Ireland, Hong Kong, Malaysia, Qatar, Saudi Arabia, Singapore, and United Arab Emirates.



Smart relays

Control groups of appliances remotely and monitor power consumption via Zigbee



Smart Cable 2

The Smart Cable 2 converts conventional power cables into remotely controlled units, which allow the user to monitor power consumption. The Smart Cable 2 enables the user to control plugged in electrical devices, with the option to switch them on or off.



Smart DIN Relay 2

The Smart DIN Relay 2 enables the user to switch equipment on or off remotely via Zigbee. It grants wireless on/off control of clusters, groups of appliances, or individual elements. It features a power meter functionality, granting the user access to monitoring the power - giving an increased overview of what unit groups consume the most power and when.



IO Module

The IO Module brings wired devices online. Providing four inputs and two outputs, the IO Module works as a bridge of reliable communication between wired devices and Zigbee networks. Devices connected to the input will trigger events, and devices connected to the output will respond to events.

Meter Interfaces

Data reporting with wireless communication for meters

Electricity Meter Interface 2, LED

The Electricity Meter Interface 2, LED serves as a Zigbee interface for your customers' electricity meters with an LED indicating power consumption. The meter interface collects meter readings from the existing meter and sends the data to appliances in the building. The user can simply follow the consumption on a display, a computer, or a mobile phone.



Electricity Meter Interface 2, P1

The Electricity Meter Interface 2, P1 is customized for power meters with a P1 port. It collects meter readings and sends the data to a gateway via Zigbee communication, ensuring secure data communication and minimal energy usage of the device. Data can be visualized in an app or other display, allowing users to follow their consumption in real-time.



External Meter Interface - Norwegian HAN

The External Meter Interface is compatible with Norwegian electricity meters with an enabled HAN interface. The meter interface collects meter readings and sends the data to appliances in the building. This way, the user is provided with real-time reporting of power consumption e.g. through a display, a computer, or a mobile phone.



Kamstrup Interface

The meter interface equips Kamstrup meters with wireless communication. The module is mounted under the standard meter cover and is compatible with single and polyphase meters. In addition to the standard Zigbee metering functionality, the device supports a complete KMP protocol via Zigbee tunnel cluster, providing extended meter functionality.



NES Meter Interface

The Zigbee and/or Wireless M-Bus module serves as a gateway between the wireless network and the NES electricity meter powerline communication. The MEP device is capable of collecting meter readings from up to 16 different meter units in one system, e.g. water, gas, and heat meters.



Prosumer Meter

The Prosumer Meter is a triple three phase meter that measures production and consumption of power on three levels; the solar cell module, the total household, and the connected grid. It provides a live feed of how much electricity is produced by the solar module and compares it to the total consumption of the household and the grid activity in general.



Gateways

All-in-one solution for connecting IoT devices across brands and wireless protocols

Squid.link gateways

The Squid.link gateways are modular platforms for connecting devices in IoT solutions and transferring data reliably and securely. The gateways are based on a programmable Linux platform and support a wide range of communication protocols. Since the gateways are white label products, they provide multiple options for customization.

Squid.link 2B

Squid.link 2B allows you to run your solution with top performance. It includes two memory configurations. In addition to the protocols supported by Squid.link Gateway, it adds Zigbee 3.0 and Bluetooth 5. You can enhance security by adding a hardware encryption chip, an eSim, and the Apple ID chip. The battery backup lasts 2-4 hours

Squid.link 2X

Squid.link 2X is a more powerful and extended version of Squid.link 2B. It is suitable for large and complex solutions such as artificial intelligence-based applications. Squid.link 2X offers a variety of features on top of those of Squid.link 2B, including a 3-axis accelerometer for tamper protection, a RFID interfaces (passive or active), a MEMS microphone, a Real Time Clock, and a 12 hour battery backup in low-power mode.



Meter Data Concentrator

The Meter Data Concentrator is a battery-powered gateway that can collect meter data from up to 1000 meters, making it ideal for energy management solutions for large building complexes. The Meter Data Concentrator communicates via Wireless M-Bus and has a battery lifetime of 10 years.

White label platform

Customize products and packaging to fit your brand

Get a solution in your own brand

Get a solution that fits the visual identity of your business seamlessly by adding your brand to the white label products included in the wireless platform. You have the opportunity to customize the design and packaging of the products in several ways. To ease the design process, we provide you with a set of templates and guidelines.

Customizable parts:

- Squid.link gateway top label
- Boxes
- Sleeves
- Installation manuals
- Labels
- Kit boxes

Further customization options

For high-volume solution, you are able to further customize many elements of the Squid.link gateways and selected devices to include only the features you need and lower the cost per product.

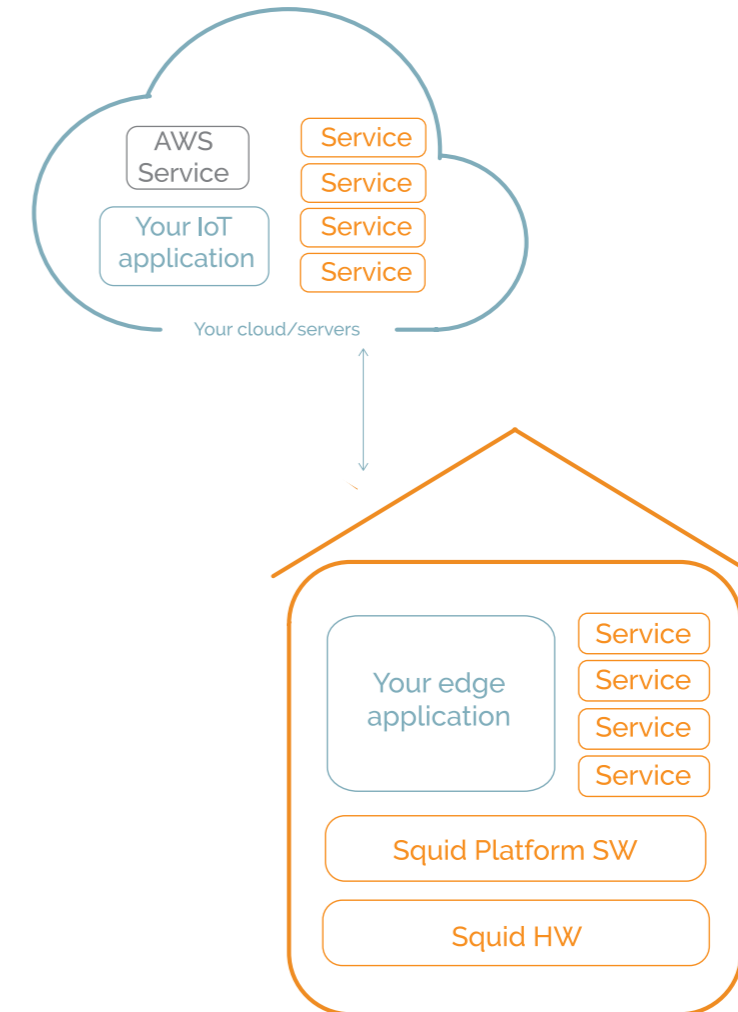


Your IoT solution with Develco Products

Easily get a reliable and secure solution in your brand

Base your solution on proven technology

Benefit from the 100+ man-years we have spent on software development and focus on your core competencies when working with our wireless platform. The platform includes the Squid.link gateway and a number of wireless devices tested and validated in large volumes.



Mature IoT platform

Build a reliable and certified IoT solution based on both our hardware and software services.

Fast time to market

Get your solution on the market faster without years of product and software development, testing, validation, and certification.

Easy usage

Use high level API for easy configuration of your application. No deep knowledge on communication protocols, product and hardware needed.

Don't waste time on platform maintenance

The entire IoT platform is maintained by Develco Products by multiple software updates every year.

Great interoperability

Connect 3rd party products to the gateway for your optimal end-to-end solution.

Secure data communication

Ensure data privacy in your solution with our multi-layered security with high encryption standards.

Cloud services - Fleet management

Easy monitoring, maintenance, and debugging of your IoT fleet



Fleet Management Services

The Fleet Management Services give you access to all you need to maintain your IoT gateways and devices. It is a range of software services that make it a lot easier for you to monitor, maintain, and debug Squid.link gateways and devices across your IoT solution. These services enable you to always stay on top of potential technical issues as well as considerably reduce maintenance costs for your solution.

Key features



Software/firmware upgrade

Easily update software in your devices over-the-air, simplifying and reducing your maintenance costs.



Monitoring

Get real-time status of all IoT devices in your network, such as wireless connection quality and battery status, to know if anything needs maintenance.



Backup/Restore

Easily backup and restore gateway data and configurations in case you need to exchange or upgrade a gateway in the system.



Access rights

Enable different access rights for different people across your IoT network to administer individual rights in sections, for support lines, geographical areas etc.



Provisioning

Enables a fast and easy way to provision and manage your IoT gateway fleet to enable secure cloud connectivity.



Remote debug

Enables fast and secure access to debug data from connected gateways for remote debugging.



Getting started

All starter kits from Develco Products are connected to Develco Products' Fleet Management demo server. You can get access to the gateway(s) included in your starter kit through the Fleet Management access right module.

For your projects, you can gain access to all gateways via the demo server from which you can develop a customized user interface to the specific needs of your solution. Develco Products can also help you develop a customized user interface.

Edge services

Optimizing data communication by storing and processing data locally



Edge computing

With edge computing, data are processed and stored locally on the gateway rather than in a cloud. This has several benefits for your solution:

- **Security:** Data not sent to the internet (cloud) is generally much better protected
- **Privacy:** Minimal or no private data about users is shared with anyone from outside
- **Latency:** Decisions are made locally on the gateway which significantly reduces delays and makes automations run smoothly
- **Stability:** Your application is not dependent on the internet or server being fully operational – the system can still work during an internet breakdown.
- **Savings:** Reduced costs for data transmissions and cloud storage

Edge (gateway) services

Choose the services you need for your solution and add functionalities in a cost-effective way.



Access module

Manage local access control to homes or buildings.



Alarm module

Home or small business alarm system, managing arming in 3 modes (away, home, and night), using sensor data from alarm capable devices, alarm user validation, event logging etc. all running locally on the gateway.



Logic rule module

Using any available data point on the gateway or from a connected device and even remote internet resources, logic rules can be defined in a "if-this-then-that" style.



Software/firmware download and upgrade

Easily download software upgrades for the gateway and IoT devices connected.



Voice over IP module

Make SIP calls from the gateway and connect your solution to Alarm Receiving Centers to validate alarm calls in care and security solutions.



DVR

Record data from multiple cameras and store only the relevant clips locally on the gateway. The DVR can store footage surrounding other system events (e.g. an alarm or door opening). Local storage provides a high level of privacy.



Cloud connectivity modules

Generic MQTT client module, MS Azure IoT hub module, AWS IoT core module.



IoT device connectivity modules

Zigbee, BLE module, Bluetooth, Wireless M-Bus, Care device (869MHz), Thread, Matter.

Squid platform software

Discover how easy our software architecture is to work with

Configuration options

The software architecture of the Squid.link gateway offers numerous configuration options, providing you with the opportunity to get a tailored wireless solution. The possibilities include:

Internet connectivity (WAN)

For the Wide Area Network (WAN) connection, the gateway allows you to choose between several wireless technologies. These include WiFi and cellular networks. Alternatively, a custom wireless technology can be used for the connection. Another option is to establish the WAN connection via an Ethernet cable.

IP communication (cloud connection)

Depending on your needs, you can choose between using MQTT, Web Services, or custom IP communication protocol to deliver data collected by the Squid.link gateways to the backend of your solution.

You can integrate 3rd party cloud services with the Squid.link gateways making it possible for you to develop applications without having to invest in the underlying infrastructure.

Application

The Squid.link gateways offer three options on how to develop the application for your solution. You can build the application yourself using one of the gateway APIs; the Squid Smart App or the SmartAMM API. We can also help you find a trusted partner that can develop the application for you.

APIs: high-level or low-level

When developing the application for your solution, you can use a high-level or a low-level API. The high-level API Squid Smart App provides a RESTful API for gateway configuration and control. It is also able to receive data from and send commands to devices in a pre-processed and protocol agnostic way.

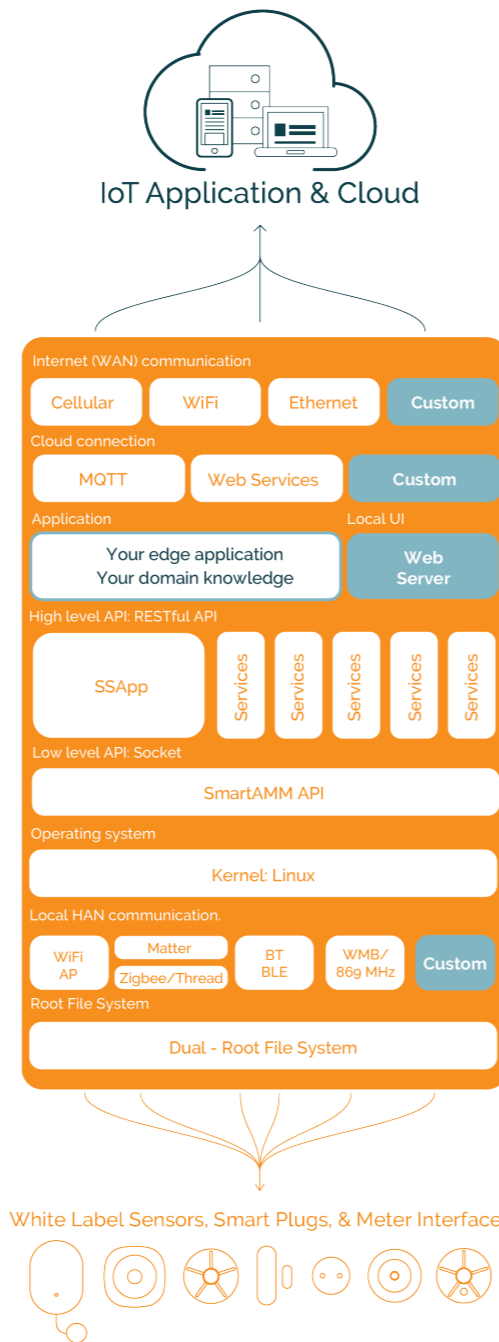
When more in-depth or specialized analysis is needed, your custom application can access the low-level Smart AMM API that provides direct access to binary messages received from or transmitting to the connected devices.

Operating system

The Squid.link gateways consists of a Linux platform, including a long-term Linux kernel and a root file system. The root file system contains a number of standard Linux utilities. The Linux platform has been developed to make it as easy as possible for you to include the functionality you want in your solution.

Device connectivity (HAN)

The multiprotocol Squid.link gateways allow you to integrate devices into your solution across wireless technologies. The gateways support Zigbee, BLE, Wireless M-Bus, Z-Wave, WiFi, cellular networks, and the Squid.link 2X is Matter ready. Support for custom wireless technologies is also possible.



Dual Root File System

The Squid.link gateways includes two root file systems. One contains the Linux/system currently active, while the other is available for download of a complete new Linux/system.

This allows for safe Root File System updates with support for rollback to the last active Root File System if the new Root File System fails to start correctly. This provides a safe solution preventing gateways being lost due to failed updates.

Starter kits

The ultimate platform to get started with your IoT solution

IoT in a box

The starter kits provide you with state-of-the-art devices and numerous possibilities. Take the first step towards getting your own IoT ecosystem with the starter kits. The market-ready devices help you accommodate the needs of your customers. The development tools and technical support allow you to focus on your core competencies.

With a starter kit, you will get the following devices:

- Squid.link gateway
- Motion Sensor
- Entry Sensor
- Intelligent Smoke Alarm
- Smart Plug Mini 2



Evaluation Kit

With the Evaluation Kit, it is possible for you to verify your concept quickly and easily. You can simply configure your system – no need for programming.

You also get a test access for Fleet Management that lets you monitor, maintain, and debug your devices remotely. For access to the full Software Development Kit (SDK), upgrade your Evaluation Kit to the Development Kit.

Key benefits

The Evaluation Kit allows you to:

- Demonstrate proof of concept
- Discover how simple it is to develop your application
- Access the REST API on the gateway
- Test the performance of mature IoT devices
- Integrate 3rd party devices
- Explore the Fleet Management Services

Development Kit

The Development Kit is intended to ease the development of your application on the Squid.link gateway.

With this kit, you get an annual software license with full access to the SDK, development tools, comprehensive technical documentation, and support from IoT experts and specialists.

Key benefits

The Development Kit provides you with:

- Full SDK access
- Development, debug, and diagnostic tools
- Comprehensive technical documentation and updates
- Configurations for C, C++, Python, and Java applications
- Secure log-on using individual keys
- Technical support (by signing a Support Agreement)

Support and tools

Get high-quality technical support from experts in IoT and wireless communication

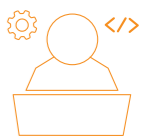
Support forum

With a starter kit, you get access to the Support forum, where you can find instructions on how to get started with the development. You can also find firmware and technical documentation for products and software as well as templates for white labeling. Use the available development tools to ease the development process remarkably. With a Support Agreement, you can also get support from our helpdesk on any technical issues you are experiencing.



SDK

In the Support forum, you can gain access to the Software Development Kit (SDK), providing you with a framework for building software running on the Squid.link gateway. The framework is based on Buildroot - a simple, efficient, and easy-to-use tool for generating embedded Linux systems through cross-compilation.



Developer Tool

The SmartAMM Developer Tool provides you with a rich set of utilities for interacting with the Squid.link gateway and connected devices across wireless technologies. Use the tool for generating, sending, receiving, and interpreting SmartAMM telegrams. The tool interacts with the Squid.link gateway through a SmartAMM Server, which you are provided with free of charge.





About Develco Products

Develco Products is a B2B company providing a market-ready, white label IoT platform to solution providers within the fields of security, care, and energy management. Develco Products offers a range of wireless gateways, sensors and alarms, smart plugs, smart relays, and meter interfaces.

Tomorrow's technology today

We are experts in wireless communication and have developed products based on a wide range of wireless technologies since 2007. We take pride in advancing the technology of Internet of Things and work with leading organizations and institutions in bringing you tomorrow's wireless technology today.



CONTACT US

Develco Products A/S
Tangen 27, 8200 Aarhus N,
Denmark
Phone: (+45) 87 400 370

Develco Products USA Inc.
299 California Avenue, suite 200,
Palo Alto, CA 94306, United States
Phone: (+1) 650 543 8171

info@develcoproducts.com
www.develcoproducts.com